



# Club Bulletin

Second Quarter Bulletin

*Southern Chester County Sportsman's  
and Farmers' Association*

720 Sportsman Lane, Kennett Square, PA

## *Exciting Times!*

2022 is definitely the year for activity to improve the facilities. Virtually every aspect of the property is having some sort of upgrade. Some, not as obvious as others, but all work being done will be discussed in this issue. Our discussion will start at the Rt. 926 entrance and work our way over to the Byrd Rd. end of the property.

Although upgrades started a couple of years ago, and will continue for a couple until final completion, 2022 is the most active point for improvements.

This issue is dedicated to highlight exactly what is taking place at 720 Sportsman Lane.

We thank the Officers, Directors and volunteer for their dedicated commitment and vision for improving facilities to meet the expectation of today's sportsman, outdoor families and junior enthusiast.

I wonder, is it coincident or fate these improvements are riding on the heels of our 75<sup>th</sup> Anniversary.

## *Calling All Existing and Prospective Mentors!*

The Executive Committee approved a "Mentor Review Board" (MRB), consisting of three experienced mentors to oversee and monitor the program and its related issues.

We are asking all existing mentors to verify their intention in continuing as a mentor, and in addition would like to invite any member to discuss their interest in the program.

Determining mentor resources are especially important during the current new member intake process.

We look forward to hearing from you at : [Mentor@sccsfa.org](mailto:Mentor@sccsfa.org)

## 926 Entrance



A new aluminum entrance sign has replaced the old, worn and tattered plywood sign. Mrs. Shirley Walton, who owns the lot on the corner where the sign is mounted was delighted when the club cleared and cleaned the corner. Thanks to Directors John Flynn and Joe Neuman for fabricating the frame, and to (Left to Right) John Sutherland, Bob Perkins, Joe Neuman, John Flynn and John Primus, not shown, he's taking the photo. Also thanks to him for the creating the sign design.

## The Former Range Area

Just pass the apartments, there is an iron pipe gate. That was the entrance to the original rifle and pistol ranges built after the property was purchased in 1964.

In talking to members about the area, some did not know the ground was club property and no one knew that the area contained the old ranges and their berms.

In the mid 70's, the club treasurer, Roger Thorp purchased the apartments and did not want the ranges close to him. He paid the club \$1000 to have the ranges moved to there current location. In doing so, for reasons unknown, the club simply abandon the old ranges. At some point the club also allowed people to dump stumps in the area.

The current plan involves several phases over the course of a couple of years in order to revitalize the area into a productive area for the membership. They are:

- Plant a privacy barrier of 80 Green Giant arborvitae along the property border with the apartment.
- Clear old berm and range areas.
- Remove a total of 200 tires from the property.
- Chip and dispose of bush and wood.
- *Phase I*
  - Develop a grading plan to create a berm to parallel the drive to address water runoff which has always been an issue while taking into consideration Phase II and III of the project. Club President David Jahn is working with the engineer Nicholas Vastardis on this portion.
  - Excavate old berm and range area according to the approved grading plan. Level remainder to complement existing area and Phase II & III.
  - Plant a privacy barrier of trees on the newly created berm paralleling the drive.



(Continued on Page 3)

## The Former Range Area (Continued from Page 2)

- *Phase I (Continued)*
  - Determine and allocate area for overflow parking area to accommodate events.
- *Phase II*
  - Excavate a portion of the front berm between the 50 and 100-yard range back into the Phase I area to allow for the construction of a storage building for the ranges.
  - Construction of building.
  - Relocation of electric and CCTV wiring.

Please note, the plans or their order may need to be modified as work progresses.

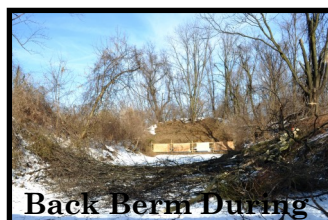
## Privacy Berm at Main Parking Area

The berm between the main parking lot and the ranges was overgrown and too short to provide privacy from the ranges. The existing berm was cleared and dirt was brought in to extend the berm another 42 feet and was then seeded.



## Range Berm Maintenance

Over the years, scrub brush and junk woody vegetation have overtaken the berms. The good trees had grown so large there was a fear the berms could no longer support the weight. It was decided to clear the 100-yard range first. At the completion, a decision was then made to clear the remaining ranges and replant.



[\(Continued on Page 4\)](#)

## Range Berm Replanting

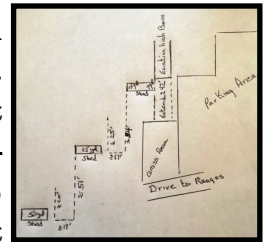
After consulting with professionals, it was determined the best course of action is as follows. Seed berms this year with annual rye grass to allow time to eliminate unwanted vegetation and woody growth until next Spring when the permanent seeding will be completed. As of now, the berms will be planted with a wild flower mix in the Spring. The seed will be applied via hydro-seeding with supplements added and using Flexterra to hold the mixture in place due to the steep slopes of the berms.

## Range Berm Height Project

Over the course of time the berms settled, exposing baffles and their width spread, encroaching on the range lanes. This became very obvious on the berms between the 15 and 25-yard as well as the 25 and 50-yard ranges. These two berms were also longer than needed which wasted parking area.



A project scope of work was developed and put out for competitive bidding. The project was awarded to the lowest bidder, the Back Woods Boys. The photo on left, of the berm between the 25 and 50-yard ranges shows the amount



of height needed to be raised in green and the area to shorten in blue. The photo on the right is a rough drawing of the project.

The committee is familiar with Back Woods Boys and the quality of their work since they completed the clearing the berms as well as other projects.



In order to raise the height without widening the berm, 2'x2'x6' solid concert blocks were used. Photo on left, the completed berm between the 15 & 25-yard ranges; on right is the 25-50-yard berm. Below are some construction photos.



## Clubhouse Septic Repair

It was reported the bathrooms were sluggish during large events held at the clubhouse. We had an internal video inspection performed and it appeared the line from the clubhouse to the holding tanks needed replaced. After accepting bids, the repair was awarded to Sceptic Service Inc. from Coatesville for \$1600. When digging to replace the pipe, a kink, about 5 feet from the tank was found to be the cause of the problem. Jack Burt from Sceptic Service recommended to only replace the damaged section. Once that section was removed, the line was again scoped to verify there were no further obstructions. The project was completed for a total cost of \$650. Thank you Jack!



## Clubhouse Audio/Video Upgrade

The Pandemic introduce us to on-line meetings. In order for members to attend, we needed to improve their ability participate by upgrading our Audio/Video technology. The IT Committee, lead by its chairman Don Sloat, presented a proposal, and once approved, purchased and installed the equipment consisting of a meeting room camera, multiple microphones and the ability to share documents and photos with all members attending the virtual meeting.

## Parking Lot Curbs

Parking lot curbs were recently installed thanks to Directors John Flynn and Joe Neuman.



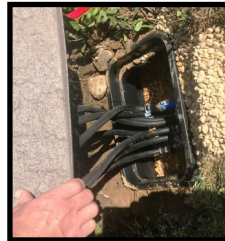
## Lake Sign

The Lake recently received a new sign. The frame and installation was courtesy of Directors John Flynn and Joe Neuman.



## Lake Aerators

Schwarz Ponds LLC installed a new aerator system consisting of an air pump and 8 defusing heads attached to weighted air lines throughout the lake. The system is equipped with separate control valves, labeled for each diffuser. The valves allow for balancing air distribution as well as to isolate a single line from the system for maintenance. Thanks to Director Charles Beatty and President David Jahn for overseeing this project.



## Electric Upgrade at Lake

It was decided to move the main panel to the lake since it would be in the middle of the proposed parking area. The new panel was moved back by the wood line. The new main panel and break box are outdoor rated and weather-proof. The electric receptacle by the holding pond was also replaced.

Director Charlie Beatty also oversaw this project.



## Lake Parking Lot Project

The approved timber harvest plan by West Marlborough Twp. called for a landing area at the lake. A parking area at the lake has been on a to-do list for far too long. It was decided to capitalize on the landing area by making improvements to provide a future parking area for the lake. To date the area is roughed out until PennDOT begins milling roads in the area and we should be able to complete the project.



Area at Start of Landing Construction



Area During Landing Construction.



Area Near Completion of Landing

## Camp Site

In the beginning, the club sported a wonderful camping are. Over the years mother nature took it's toll.



Thanks to the effects of Camping Chairman Jamie Nardozzi, Members Mike Nardozzi, John Sutherland and VP John Primus, we have reclaimed the area which now includes the addition of a large firepit for fellowship. To celebrate, the camping committee will be hosting a Family Camping Night. Keep a watch for the email announcement. Thanks also to Secretary Rob Detweiler for the donation of the seed.



## Shot Curtain Preparation at Trap Range

In order to contain and collect the shot dispensed when shooting Trap, the use of shot curtains will be used. When installing the curtains, a distance of approximately 90-yards is needed, a distance we did not have due to brush growth and an outgrowing tree line.

When J&L was on-site for the timber harvest, we were discussing the purpose for using curtains and the fact we didn't have enough cleared area. They offered to help by clearing the area needed at no charge. They simply wanted to help out. When J&L was finished, the Back Woods Boys chipped up the remainder of the wood and Angelini's Land Management removed the piled brush, graded and completed the soil prep. The Ram-T company completed the seeding and mulch. VP John Primus provided the oversight for this project.



Left - Side  
Trap Range  
Before & After

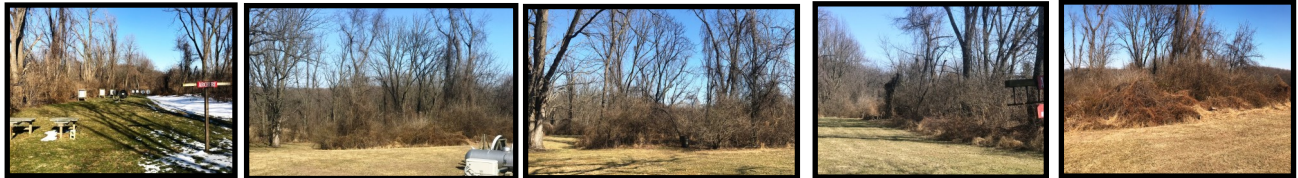


Right - Side  
Trap Range  
Before & After

## Outdoor Archery Range

The overgrown area and bank between the outdoor archery range and clubhouse limited the range's potential. In order to maximize the use, J&L volunteered to rough grade the area, Josh Thompson completed the stump grinding, and Angelini's Land Management completed the final grade and soil prep. The Ram-T company provided the seeding and mulching services. Thanks to Archery Chairman Percy Reynolds, Member Rich DeBacco, and VP John Primus for overseeing the project.

Photo before the start of project.



Photos of work in progress.



Range at Completion.



## Clean Up Project by Pole Barn

The stockpile of debris on the Westside of the pole barn has finally been cleared. Work was performed by the Back Woods Boys and one of our neighbors on Sportsman Lane, Kevin McCusker and his father, hauled 3 loads of the debris off the property in one of their 40-yard dump trailers.





## Byrd Rd Parking Lot Project

A landing at Byrd Road was also included in the timber harvest plan approved by West Marlborough Twp. A parking area for the outdoor archery course was not on the to-do list. However, it was decided to take advantage of the opportunity to use the landing area as a parking area. To date the area is roughed out and has Rip-Rap stone, but when PennDOT begins milling roads in the area we should be able to complete the project. Thanks to VP John Primus for overseeing this project.

Photo before the start of project.



Photo during the of project.



Please drive by the Byrd Rd. entrance to the outdoor archery course to see the project to date for yourself.

## Timber Harvest

The club purchased the 47 acres in 1964. Since that time, there has been little effort to maintain a healthy forest. The canopy had gotten so large there wasn't enough light making its way on to the forest floor to provide for new health growth.

In February, to begin fulfilling our responsibility, a Forest Stewardship Plan was developed by a professional forester, Ryan Shaw, a USDA, NRCS Technical Service Provider. To see the complete 142 page plan, including maps, [Click Here](#).



**Reminder!**  
**Next Year is a Biggy.**

# Club Officers, Contacts and Important Dates

## Club Officers:

President, David Jahn	<a href="mailto:president@sccsfa.org">president@sccsfa.org</a>
VP, John Primus	<a href="mailto:vice-pres@sccsfa.org">vice-pres@sccsfa.org</a>
Treasurer, Steve Bunnell	<a href="mailto:treasurer@sccsfa.org">treasurer@sccsfa.org</a>
Secretary, Robert Detweiler	<a href="mailto:secretary@sccsfa.org">secretary@sccsfa.org</a>

## Committees:

Archery, Percy Reynolds	<a href="mailto:archery@sccsfa.org">archery@sccsfa.org</a>
Black Powder	<a href="mailto:blackpowder@sccsfa.org">blackpowder@sccsfa.org</a>
Camping, Jamie Nardozzi	<a href="mailto:camping@sccsfa.org">camping@sccsfa.org</a>
Education, Sean Zhang	<a href="mailto:education@sccsfa.org">education@sccsfa.org</a>
Facilities, Joe Neuman	<a href="mailto:facilities@sccsfa.org">facilities@sccsfa.org</a>
Field Day, John Flynn	
Finance	
Fish and Lake, Mark Fenster	<a href="mailto:fish-lake@sccsfa.org">fish-lake@sccsfa.org</a>
Forestry, Glen Fagerli	<a href="mailto:forestry@sccsfa.org">forestry@sccsfa.org</a>
Full Auto, John Flynn	<a href="mailto:fullauto@sccsfa.org">fullauto@sccsfa.org</a>
Information Technology Don Sloat	<a href="mailto:it_committee@sccsfa.org">it_committee@sccsfa.org</a>
Junior Shooting Program, David Hutchins	<a href="mailto:junior@sccsfa.org">junior@sccsfa.org</a>
Kitchen, Lt. David Ham	<a href="mailto:kitchen@sccsfa.org">kitchen@sccsfa.org</a>
Legislative Action, Larry Bickings	<a href="mailto:legislativeaction@sccsfa.org">legislativeaction@sccsfa.org</a>
Membership, David Jahn	<a href="mailto:membership@sccsfa.org">membership@sccsfa.org</a>
Newsletter, John Primus	<a href="mailto:newsletter@sccsfa.org">newsletter@sccsfa.org</a>
Nominations	<a href="mailto:nominations@sccsfa.org">nominations@sccsfa.org</a>
Pistol, John Hodges	
Rifle, David Stephens	<a href="mailto:rifle@sccsfa.org">rifle@sccsfa.org</a>
Safety, Warren Goodwin	<a href="mailto:safety@sccsfa.org">safety@sccsfa.org</a>
Shotgun, Steve Bunnell	<a href="mailto:shotgunsports@sccsfa.org">shotgunsports@sccsfa.org</a>

## Directors:

Charles Beatty
John Flynn
Joe Neuman
Percy Reynolds
Larry Bickings
Jerry Downie
Warren Goodwin
Don Sloat

**Phone:**  
(610) 268-3739

**Website:**  
[sccsfa.org](http://sccsfa.org)

**General Email:**  
[membership@sccsfa.org](mailto:membership@sccsfa.org)

**Game Commission Southeast Office:**  
(610) 926-3136  
(610) 926-3137

**Fish & Boat Commission Southeast Region:**  
(717) 626-0228

### Executive Meeting Dates:

June 14 @ 7:00pm
July 12 @ 7:00pm
Aug 2 @ 7:00pm
Sept 6 @ 7:00pm
Oct 4 @ 7:00pm

### General Meeting Dates:

June 28 @ 7:00pm
July 26 @ 7:00pm
Aug 30 @ 7:00pm
Sept 27 @ 7:00pm
Oct 25 @ 7:00pm